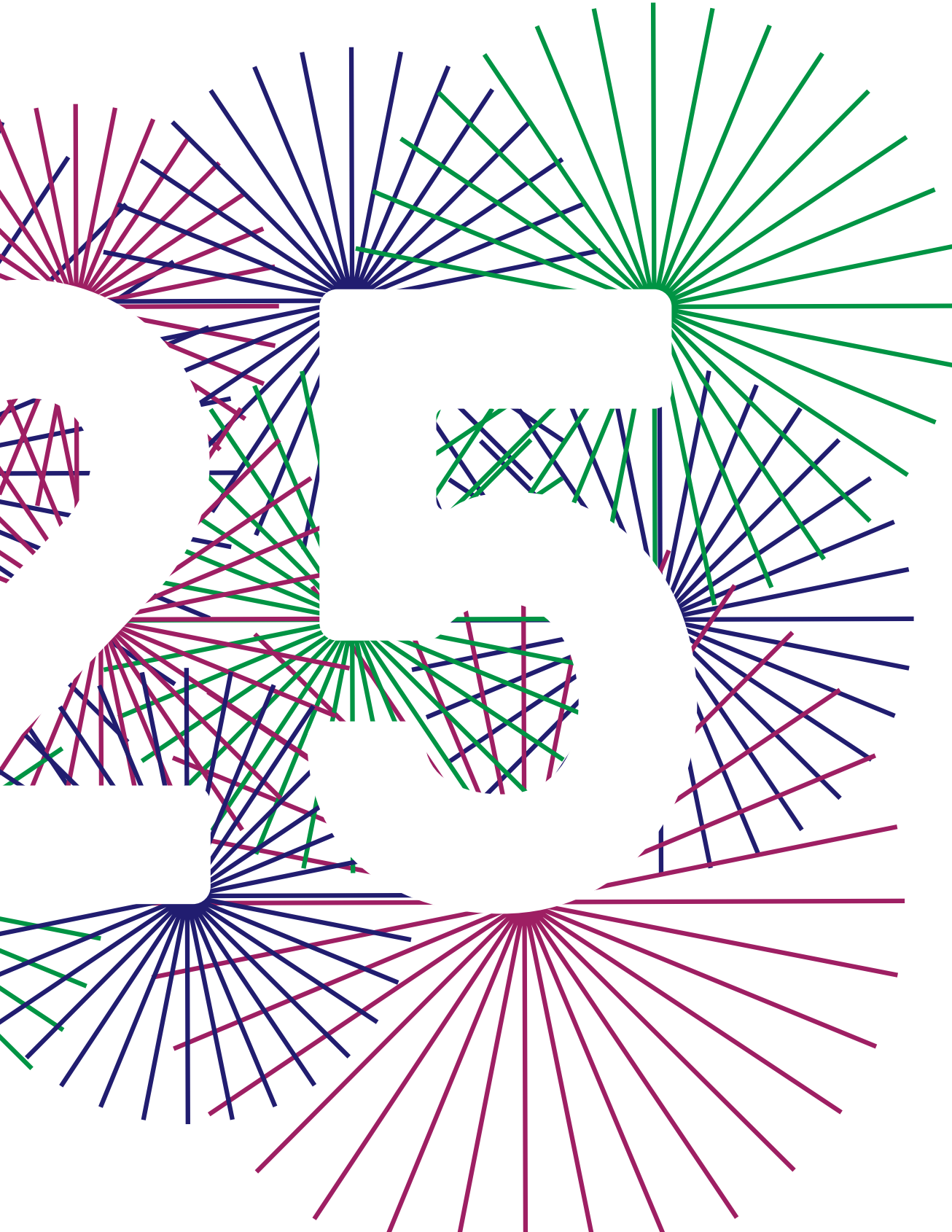


DataHaven

25 YEARS OF DATA FOR COMMUNITY ACTION



THANK YOU TO OUR 25TH ANNIVERSARY
SPONSORS AND EVENT SUPPORTERS

ANNIVERSARY PRESENTING SPONSORS



LEAD EVENT SPONSORS



EVENT SUPPORTERS



Follow us at ctdatahaven.org/anniversary to learn about
additional 25th anniversary events in 2019



25th Anniversary Celebration & Statewide Data Release

YALE SCHOOL OF MANAGEMENT, NEW HAVEN, CONNECTICUT | NOVEMBER 19, 2018

8:00 am Breakfast & Networking

9:00 am Welcome

Penny Canny – Board Chairperson, DataHaven

Mark Abraham – Executive Director, DataHaven

Kathy Pettit – Principal Research Associate, Urban Institute; Director, National Neighborhood Indicators Partnership

9:20 am Keynote

Geospatial Data Is Everywhere (Literally!): Novel Data Sources to Study the Impact of Neighborhoods on Health

Dustin T. Duncan, ScD – Associate Professor of Population Health and Director of Spatial Epidemiology Lab, New York University

10:00 am Breakout Sessions

a. The 2020 Census

Moderated by Kathy Pettit

Challenges and Opportunities

Terri Ann Lowenthal – Consultant (all things census!);

Former Staff Director, House Subcommittee on Census and Population

Opportunities to Partner

Jeff T. Behler – New York Regional Director, U.S. Census Bureau

How to Access Data

Ana-Maria Garcia – Data Dissemination Specialist, U.S. Census Bureau

b. Emergence of Statewide Health Data Sharing and Analytics

Moderated by Tekisha Dwan Everette, PhD – Executive Director, Health Equity Solutions

Allan Hackney, CISM, CRISC – Health Information Technology Officer, Connecticut Office of Health Strategy

Karen Wang, MD, MHS – Instructor, Yale School of Medicine and Yale University Equity Research and Innovation Center

11:00 am DataHaven Innovation Awards Presentation

11:15 am Statewide Data Release

Dr. Don Levy – Director, Siena College Research Institute

Mark Abraham – Executive Director, DataHaven

12:00 pm Lunch & Networking

Row 1, L to R: K. Pettit, D. Duncan, T. Lowenthal, J. Behler, A. Garcia Row 2, L to R: T. Everette, A. Hackney, K. Wang, D. Levy, M. Abraham

DataHaven Innovation Awards Winners 2018

The DataHaven Innovation Awards, presented by Liberty Bank Foundation, recognize individuals and organizations who employ data to make Connecticut a better place.

Public data is a critical tool for cultivating partnerships and measuring progress in communities across the state. DataHaven is proud to highlight the creativity and ingenuity of these individuals and organizations.

Congratulations to our 2018 Innovation Awards Winners!



DataHaven Innovation Awards Winners 2018

Data in Education, K-12 Level

Ms. Carolyn Streets, Middle School ELA, Department Chair, Engineering & Science University Magnet School
Action research using local data to develop a new instructional strategy that teaches the nuances of STEM-specific words to build reading comprehension.

Data in Education, University and Graduate Level

Conservation Training Partnerships Program, University of Connecticut Natural Resources Conservation Academy
Empowering groups of teens and adults with geospatial technology to boost local conservation efforts.

Data for Community Impact, Small Organization

New Haven Promise
Use of innovative data systems to help students and families meet high-impact college and career goals.

Data for Community Impact, Large Organization

Quality Analytics & Research Department, Clifford Beers
Data analysis and community engagement to improve the lives of children and families by addressing exposure to Adverse Childhood Experiences.

Clockwise, from left: New Haven Promise, Carolyn Streets, CTPP at UConn, Clifford Beers





A MESSAGE FROM PENNY CANNY,
DATAHAVEN BOARD CHAIRPERSON

Twenty-five years ago, a small group of forward-looking “data geeks” came together around the shared belief that public data could be used to better understand and address the issues facing our community.

Over the years, DataHaven has taken this mission a step further by collecting its own survey data, thus painting a more complete picture of how communities and neighborhoods are faring in critical areas like safety, health, and economics. Times have changed. In the current era of “big data,” the challenge is no longer convincing groups of the importance of data collection, but rather curating the vast amount of available data to effectively shine a light on inequities and improve the well-being of communities.

Data has become a precious resource—as valuable as oil or gold in the past. It is more important now than ever that we uphold our mission of sharing data as a public good to promote the well-being of many, rather than using data for profit. As we plan for DataHaven’s next 25 years with the input of partners and community members, we envision our organization continuing to act as a beacon for collecting, analyzing, and sharing the types of data critical to enhancing lives.



"The Fairfield County Community Wellbeing Index 2016 has helped to **identify and develop priorities for collective action** to build a stronger, healthier, and more equitable Fairfield County."

Juanita T. James
President & CEO
Fairfield County's Community Foundation



"DataHaven and the Institution for Social and Policy Studies share the same DNA; we're proud to support a sibling institution that defines what it means to **deploy social science analysis for the common good.**"

Jacob Hacker, PhD
Institution for Social and Policy Studies
Yale University

Measuring Our Impact

In 2017-19,
DataHaven is collaborating with

149
invested partners

(Invested partners in 2008-10: 25)

"I've had the great pleasure of working with Mark and DataHaven for the last five years—working to prepare our 2016 Valley Community Index and now moving on to the 2019 report. **We've had rave reviews because of the work that DataHaven has done with us.**"

Sharon Closius
President & CEO
Valley Community Foundation



"Having access to DataHaven is invaluable. They provide comprehensive analysis of public and self-collected data, which supports our ability to **make decisions that best serve the community.**"

Merle Berke-Schlessel, Esq.
President & CEO
United Way of Coastal Fairfield County



“DataHaven works collaboratively across Connecticut to create a **collective, inclusive vision** for the state we call home. I am proud and honored to support DataHaven’s work as a Board Member.”

Caroline Smith
Co-Director, Collab
Board Member, DataHaven

In 2017-19,
DataHaven will complete

16
major publications

(Major publications in 2008-10: 4)



“We have found the insights provided by DataHaven’s Wellbeing Survey to be invaluable in **understanding our community’s needs**, which has helped enhance the collective impact of Griffin Health and its community partners.”

Patrick Charmel
President & CEO
Griffin Hospital



In 2017-19,
DataHaven has secured

\$1.7
million
in partner support

(Partner support in 2008-10: \$297,000)

“DataHaven is invaluable to the nonprofit community as a **key source of quality data**. Mark and his team have been helpful in building our research-based understanding of the issues affecting Eastern Connecticut.”

Maryam Elahi
President & CEO
Community Foundation of
Eastern Connecticut



“DataHaven’s Wellbeing Survey fills in gaps where we lack information. It is designed to **deliver insights in the areas that aren’t captured by administrative data** and other sources.”

Scott Gaul
Director of Research & Evaluation
The Hartford Foundation for Public Giving

In 2018, DataHaven reached nearly

8,000
followers on
social media

(Followers in 2010: 300)



Looking Back: 25 Years of Public Service

We owe a great debt to our original founders and partners—their vision and spirit will continue to inspire and guide us over the next 25 years, as we work to improve access to high-quality data and encourage data collaboration across Connecticut. This is their story.

The Kernel of an Idea

In 1986, Cynthia Farrar and the Community Foundation for Greater New Haven joined forces with the City of New Haven in an effort to reduce the infant mortality rate and improve health outcomes for the city's children. Before long, the City's Health Department, community organizations, service providers, and neighborhood and business leaders realized that they too shared a focus on the same areas of New Haven, but each was supplying just one element of a better future for children. Shared data emerged as an essential tool for fitting the pieces together—and so the kernel of the idea for a data cooperative was born.

Thanks to the effort and guidance of numerous community leaders—many of whom are serving on DataHaven's 25th Anniversary Committee—and supported by the mapping and networking skills of then-Yale sociology graduate student Dan Ryan, we developed the capacity to analyze data across sectors and by geographic area.

A Warehouse for Data

After being introduced to geographic information system mapping technology (GIS) by Yale professor Doug Rae, Dan Ryan overheard a conversation at a Yale Institution for Social and Policy Studies (ISPS) meeting about the difficulties community-based organizations faced in trying to make effective use of government data. A group of collaborators—including Doug Rae, Cynthia Farrar, and Dan Ryan, with volunteer assistance from Jim Farnam—applied for a HUD grant to fund partnerships between New Haven neighborhood organizations and Yale University.

Dan envisioned a data warehouse that would allow groups to view and download New Haven data. With the support of ISPS, The City Room was born in a basement on Hillhouse Avenue. Dan Ryan served as director and undertook the mission of developing a website for data sharing.

Data Sharing for Community Action

At the same time, a loosely-affiliated network of individuals at Yale, the Greater New Haven Chamber of Commerce, City Hall, and local consulting firm Holt, Wexler, and Farnam (HWF) were thinking hard about data consolidation. Their understanding of community dynamics allowed them to see that a data-sharing network, rather than a data center, would be the most effective option for achieving a shared data ecosystem in New Haven. Thus, The City Room transitioned into the Regional Data Cooperative.

Momentum continued to build around local data sharing, with more groups becoming vocal advocates. New Haven Fighting Back, an anti-drug coalition, formed neighborhood management teams in collaboration with the New Haven Police Department, which was then implementing community-based policing under Chief Nick Pastore. Barbara Geller (Fighting Back Project Director), Karyn Gilvarg (City Plan Director), and groups like the Livable City Initiative and Enterprise Community Project began trumpeting the benefits of data collection, sharing, and mapping—setting the stage for the Cooperative's first major report.

1992/1993

THE REGIONAL DATA COOPERATIVE IS

**FOUNDED BY GROUP
OF VISIONARIES**

In 1995, the Regional Data Cooperative published the groundbreaking *New Haven Maps '95* (available at <http://ctdatahaven.org/reports/new-haven-maps-1995>), with infant and child health as its central case study. We spent the better part of a year using technology that was not quite up to the task to produce the report. In retrospect, it was a humble product but a valuable proof of concept—that a community could share data and analyze challenges through data and data maps.

Finding a New Path: Online Data Access

After The City Room closed its doors in 1998, the Regional Data Cooperative, now led by Cynthia Farrar and the late Fabio Sampoli of the Greater New Haven Chamber of Commerce, experimented with several business models to sustain its work. For a time, well-known Connecticut economist Don Klepper-Smith served as the Cooperative's director, but finding a sustainable model remained a challenge. The Cooperative ceased staffed operations in 2003 and retained Jim Farnam to convene all partners and assess interest in continuing the collaboration in some form.

The resounding consensus was that there remained a strong interest in the need for a data intermediary to advance the cause of public data access and use. The group decided to create a website for serving up all available data in an accessible, query-able form that would serve the community and rally regional groups to collect and share more and better data. Because of its work on many federal grants, including the Empowerment Zone in 1998, HWF had become a nodal point in the community for extensive data. They were a natural choice to develop the site and serve as the manager of the Cooperative.

This new direction called for a new name: Cynthia Farrar won the naming contest with her suggestion of DataHaven. Launching its website in 2003, DataHaven went on to expand its data offerings and conduct trainings for regional nonprofits. Local funders helped sustain DataHaven as a critical component of the nonprofit infrastructure of the region.

DataHaven Today: Measurement as a Unifier

In 2008, under the leadership of Board Chairperson Penny Canny of the Community Foundation and Jim Farnam of HWF, DataHaven became a formal partner of the National Neighborhood Indicators Partnership (NNIP), a collaboration between the Urban Institute and 30 local organizations that connect people with neighborhood data. The following year, the board selected Mark Abraham, then working as an Associate at HWF, to serve as DataHaven's Executive Director.

Leveraging our growing full-time staff, dedicated Board, and newly-available technologies, DataHaven began to expand our programs and services. In 2010, we partnered with over a dozen organizations in New Haven to create and launch surveys that engaged residents in collecting data on quality of life at the block level.

By developing a detailed understanding of the data needs of dozens of different health care, government, and philanthropic organizations, Mark Abraham expanded DataHaven's survey program to the Greater New Haven region in 2012 and to the entire state in 2015 and 2018, harmonizing many existing survey instruments into one high-quality, statewide survey. Mark engaged Don Levy, Director of the Siena College Research Institute and former Director of Research at UConn's Center for Population Research, to complete live, in-depth interviews with approximately 35,000 randomly-selected residents in every Connecticut neighborhood. DataHaven also developed a related Community Index—a comprehensive publication on key social and economic trends in each region of the state—and, in 2015, launched a new website to host data. By cultivating these programs and other partnerships, Mark and his staff have been nationally recognized for their expertise in the collection and use of local-level data.

Today, DataHaven's work allows more than 100 agencies and organizations across Connecticut to pool resources and measure key areas such as public health, racial equity, education, civic engagement, and economic opportunity, so that programs and resources can be deployed to change lives for the better.

1994

HUD COMMUNITY OUTREACH
PARTNERSHIP CENTER

GRANT RECEIVED

THE CITY ROOM AT YALE ISPS IS CREATED

1995

FIRST REPORT PUBLISHED

WITH THE HELP OF STAFF
AT YALE UNIVERSITY

Our Programs: Data for Community Action

DataHaven's mission is to improve quality of life by collecting, interpreting, and sharing public data for effective community decision-making.

We work with a wide range of partners to develop reports, tools, and technical assistance programs that make information more useful to local communities, and we support community action by partnering directly with public agencies, academic and health care institutions, foundations, and local residents. Our nationally recognized work advances the use of high-quality, neighborhood-level information across a wide variety of issue areas.

Website and Local Capacity Building

DataHaven's website houses frequently-requested information, including neighborhood, town, and legislative district maps and profiles for the entire state. This information is openly accessible, searchable, and downloadable—free of charge. DataHaven also provides free technical assistance and training to hundreds of agencies, organizations, researchers, and journalists each year.

Community Wellbeing Surveys

Our largest current program, the DataHaven Community Wellbeing Survey, produces extensive information on quality of life, public health, economic development, and civic vitality for partners throughout Connecticut. The survey was fielded in 2012, 2015, and 2018, completing in-depth interviews with over 35,000 randomly-selected adults in every Connecticut city and town. It is believed to be the largest neighborhood-level well-being survey in the United States.

The program is supported by more than 80 public and private funders, including most of Connecticut's community foundations, United Way chapters, large municipalities, health districts, and hospitals. Through public events, mailings, and other communications strategies, these partners also help us distribute the data directly to tens of thousands of area residents.

Community Indexes

Results from each Community Wellbeing Survey are published in a series of Community Index reports, helping to unify the work of our partners by creating a collaborative platform to measure community issues in unique and meaningful ways.

These reports shed light on the progress being made on community priorities through contextualized analyses of key issues like financial security for families, access to affordable health care, public health and safety, and opportunities for children to succeed, as well as on current challenges, such as the opioid epidemic, housing instability, and limited access to transportation. Vivid graphics and regional voices—narratives from local experts, residents, business owners, and community workers—illuminate key implications of the findings.

DataHaven's Community Index reports are crucial for stakeholders—corporations, government agencies, nonprofits, hospitals, and institutions—who wish to understand their community. These reports not only serve as region-wide indicator platforms, they also function as Community Health Needs Assessments for many hospitals and health departments.

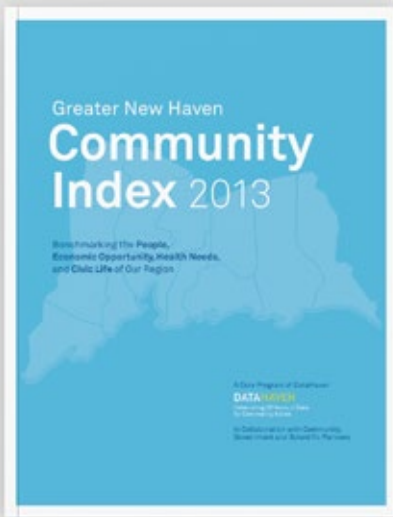
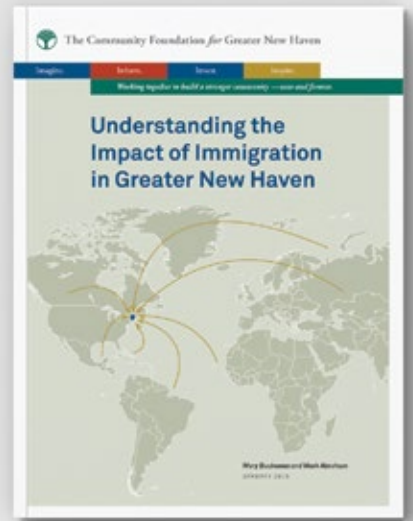
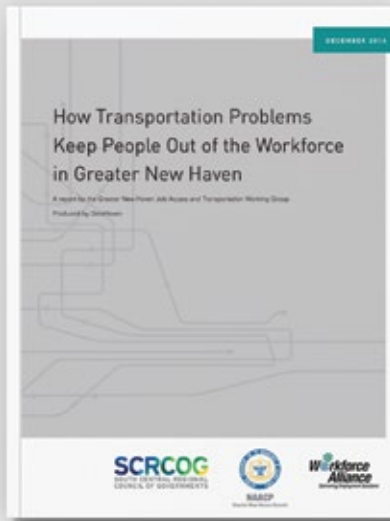
We're proud to announce that we will release Community Index reports for five major regions in 2019: Fairfield County, Greater New Haven, the Lower Naugatuck Valley, Greater Waterbury, and—for the first time—Greater Hartford.



1998
A BUSINESS PLAN
IS PUBLISHED



2000
RDC IS INCORPORATED
AS A 501(C)(3)
NONPROFIT ORGANIZATION



2003
RDC IS REBRANDED AS DATAHAVEN
OUR WEBSITE LAUNCHES

2007
PENNY CANNY
BEGINS HER TENURE AS BOARD CHAIR



2008
WE BECOME A FORMAL PARTNER OF THE URBAN INSTITUTE'S NATIONAL NEIGHBORHOOD INDICATORS PARTNERSHIP

Our Collaborations

DataHaven has a long track record of collaborating with partners to produce analyses, reports, and programs that provide key insights into the well-being of Connecticut communities.

In 2009, building on the successful model of *New Haven Maps '95*, DataHaven set out to examine community health in New Haven by looking directly at the factors contributing to health inequities. In partnership with key New Haven stakeholders, DataHaven undertook its first community survey by collecting data to support the analysis of a wide range of indicators related to social determinants of health. A subsequent report analyzed key indicators in areas such as health, economic security, education, safety, and community assets and outlined both the positive and negative trends in New Haven.

The report, *Creating a Healthy New Haven*, provided a framework that would lead to DataHaven's lauded Community Wellbeing Surveys and Community Index reports. While DataHaven's early work focused on the Greater New Haven region, our reputation for providing unique expertise in the collection and analysis of data related to community well-being has led to collaborations across Connecticut and nationwide.

For additional information about our collaborations, visit ctdatahaven.org/reports.

Health Equity Data Analytics (Ongoing)

Partners: Health Equity Solutions, Inc., Yale School of Medicine; ERIC, UConn AIMS, Connecticut Health Information Technology Office

DataHaven is currently working with partner organizations to evaluate health equity issues and data elements in Connecticut, with the goal of informing the development of the forthcoming statewide health information exchange.

Fairfield County Women and Girls Report 2019 (Ongoing)

Partners: Fairfield County's Community Foundation
A collaboration with the FCCF Fund for Women & Girls that will result in a needs assessment for women and girls in Fairfield County.

Greater Hartford Neighborhood Data Hub (Ongoing)

Partners: North Hartford Triple Aim Collaborative, City of Hartford, Saint Francis Hospital, Hartford Foundation
A data hub, managed by DataHaven, designed to support the more effective collection, curation, sharing, and use of neighborhood-level, cross-sector data in the Hartford area.

Connecticut Health Equity Data Project (Ongoing)

Partners: Connecticut Health Foundation, others TBA
Coinciding with our 25th Anniversary, our 2019 statewide report will use detailed new data and community outreach to identify barriers to well-being among smaller demographic groups within Connecticut.

Status of Women and Girls in Eastern Connecticut (2018)

Partners: Community Foundation of Eastern Connecticut
A platform for action to increase opportunity, access, and equity for women and girls in Eastern Connecticut.

Greater Waterbury Community Wellbeing Profile (2018)

Partners: Greater Waterbury Health Partnership
An analysis of data about life in Greater Waterbury's 21 towns, focusing on changing demographics, economic and educational opportunities, civic vitality, and health and well-being.

Branford Community Report/Guilford Community Report (2017)

Partners: Branford Community Foundation, Guilford Community Foundation, The Community Foundation for Greater New Haven
A series of community-specific reports drawing upon local, state, and federal public data that was collected and analyzed by DataHaven in the Greater New Haven Community Index 2016.

Greater New Haven, Fairfield County, and Valley Region Community Indexes (2016 and Ongoing)

Partners: Visit ctdatahaven.org/reports to view the reports and find a complete list of partner organizations
Please see the *Our Programs* section of this document for details on our widely heralded Community Indexes.

Childcare Accessibility and Enrollment in Waterbury (2016)

Partners: Leever Foundation
Information on the number of young children by zip code and neighborhood, available childcare slots by cost and type, and the relative adequacy or shortage of childcare by neighborhood.

Connecticut Civic Health Index (2016)

Partners: National Conference on Citizenship, Connecticut Secretary of State, Everyday Democracy
An assessment of numerous indicators related to civic participation and community engagement in Connecticut, gauging the status of civic health in the state, compared to previous years and to the civic health of other states and the nation as a whole.

Understanding the Impact of Immigration on Greater New Haven (2015)

Partners: The Community Foundation for Greater New Haven
An analysis of the demographic, social, and economic impact of immigration in Greater New Haven, finding that the diverse immigrant population of the region has contributed significantly to growth, development, and civic well-being.

The Livability of New Haven and Connecticut for the Aging Population (2015)

Partners: World Health Organization, Connecticut's Legislative Commission on Aging, Connecticut Community Foundation, Connecticut Council for Philanthropy
DataHaven was one of 15 organizations worldwide selected by the World Health Organization to assess local "age-inclusiveness," based on a variety of indicators related to transit and community design, community life, health, and basic needs.

How Transportation Problems Keep People Out of the Workforce in Greater New Haven (2014)

Partners: South Central Regional Council of Governments, The Greater New Haven NAACP, Workforce Alliance
An analysis of the question, "How does transportation—or lack thereof—keep people out of the workforce?" Spatial mismatch between supply and demand for regional jobs, limitations to the public transportation system, and inaccessibility of high-paying jobs within a short commute were among the issues identified.

Greater New Haven Community Index (2013)

Partners: The Community Foundation for Greater New Haven, Yale New Haven Hospital, New Haven Health Department, Carolyn Foundation, CARE, Annie E. Casey Foundation, NewAlliance Foundation, United Way of Greater New Haven, The United Illuminating Company and Southern Connecticut Gas
Our first Community Index report of Greater New Haven, benchmarking the progress of people, economic opportunity, health needs, and civic life in the region.

Race, Place, and Health: A Comparative Review of Health Data on African American Males in Bridgeport, Connecticut (2013)

Partners: Aspen Institute Roundtable on Community Change
A baseline of information about a variety of barriers that may prevent African American men in Bridgeport and other Connecticut cities from achieving their full health potential.

Urban Apartheid (2013)

Partners: The Greater New Haven NAACP, Annie E. Casey Foundation, Empower New Haven, The Community Foundation for Greater New Haven
An analysis of the status of minority affairs in Greater New Haven, highlighting startling economic, educational, and health disparities between whites and people of color in the region.

Creating a Healthy New Haven (2009)

Partners: New Haven Health Department, CARE
A profile of health trends to set the stage for local action, aimed at addressing the social determinants of health and reducing health inequities.

New Haven Maps '95 (1995)

Partners: Institution for Social and Policy Studies at Yale University, City of New Haven, The Community Foundation for Greater New Haven
Our very first report, using mapping techniques to visualize cross-sector, neighborhood-level data, with infant and child health as a main case study.

2009

MARK ABRAHAM

THE CURRENT EXECUTIVE
DIRECTOR IS HIRED

2010

OUR FIRST
LARGE SCALE SURVEY
IS COMPLETED

2016 CONNECTICUT
CIVIC HEALTH INDEX™



DataHaven



National Conference on Citizenship
Connecting People. Strengthening Our Country.



URBAN APARTHEID

A report on the status of minority affairs in the Greater New Haven area

Prepared by the Greater New Haven Branch of the NAACP

**Race, Place, and Health: A comparative
review of health data on African American
males in Bridgeport, Connecticut**

Mark Abraham, Executive Director, DataHaven
5/30/2013

Prepared on behalf of the Aspen Institute Roundtable on Community Change



Branford 2017 Community Report

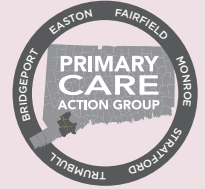
The Branford Community Foundation (BCF) connects people who care with causes that matter, for the purpose of preserving and promoting the quality of life in Branford. Established in 1980, BCF maintains over two million dollars in endowed funds and invests nearly \$100,000 in our community each year through grants, scholarships and leadership initiatives. Every day, it helps address the most pressing issues facing the community in areas such as: basic needs, health, education, the arts, the environment, youth and civic engagement. In so doing, the BCF impacts lives, solves problems, and improves futures.

Learn more at branfordcommunityfoundation.org.

 The **COMMUNITY** Foundation for Greater New Haven

Our Current Partners

LEAD PARTNERS: STATEWIDE AND REGIONAL



SUPPORTING PARTNERS



Greater Waterbury Health Partnership includes Chesprocott Health District, Connecticut Community Foundation, Pomperaug District Department of Health, Saint Mary's Hospital, StayWell Health Center, United Way of Greater Waterbury, Waterbury Department of Public Health, and Waterbury Hospital

Greater Bridgeport Primary Care Action Group includes Bridgeport Health & Social Services Department, Bridgeport Hospital, Fairfield Health Department, Monroe Health Department, St. Vincent's Medical Center, Stratford Health Department, and Trumbull Health Department

Thank you to all of our generous partners who support us in 2017-19, as we complete our 2018 Community Wellbeing Survey and 2019 Community Indexes.

CONTRIBUTING PARTNERS

Carolyn Foundation
Central Connecticut Health District
Community Foundation of Eastern Connecticut
Eastern Highlands Health District
Foundation for Community Health
GNH Green Fund
Griffin Hospital
Katharine Matthies Foundation
Ledge Light Health District
Liberty Bank Foundation
Middlesex Hospital
NewAlliance Foundation
New Haven Health Department
United Way of Coastal Fairfield County
United Way of Greater New Haven
United Way of Western Connecticut
Valley United Way
Yale University

LOCAL PARTNERS

Bethel Health Department
Bristol Development Authority
Bristol Hospital
Capitol Region Council of Governments
Danbury Health Department
Day Kimball Healthcare
Gaylord Hospital
Hospital for Special Care
Jeniam Foundation
Main Street Community Foundation
Meriden Department of Health & Human Services
Milford Health Department
New Fairfield Health Department
Newtown Health District
Newtown-Sandy Hook Community Foundation
North Central District Health Department
Northeast District Department of Health
Norwalk Health Department
Planned Parenthood of Southern New England
Stamford Health Department
Taunton Press Newtown Children and Families Fund
Trinity College Center for Urban and Global Studies
Wallingford Health Department
Workforce Alliance
Yale Medical Group
Yale University Center for Science and Social Science Information



2013

OUR FIRST COMMUNITY WELLBEING INDEX
RECEIVES NATIONAL RECOGNITION



2015

WE COMPLETE OUR
FIRST STATEWIDE
COMMUNITY SURVEY

Honorary Committee

Special thanks to our 25th Anniversary Honorary Committee—these respected leaders are helping us celebrate DataHaven’s first 25 years and setting the stage for our next quarter century of uniting Connecticut through high-quality data.

Honorary Committee Members

Mark Abraham, DataHaven
Liany E. Arroyo, MPH, CPH, City of Hartford
Patricia Baker, Connecticut Health Foundation
Merle Berke-Schlessel, Esq, United Way of Coastal Fairfield County
Ben Berkowitz, SeeClickFix
Maritza Bond, MPH, City of Bridgeport
Penny Canny, PhD, DataHaven
Patrick Charmel, Griffin Health Services
Xiangming Chen, Trinity College
Erik Clemons, ConnCAT
Sharon L. Closius, Valley Community Foundation
Amanda Durante, PhD, Connecticut Department of Public Health
Maryam Elahi, Community Foundation of Eastern Connecticut
Jim Farnam, Farnam Associates, LLC
Cynthia Farrar, PhD, Purple States TV
Gina Federico, North Hartford Collaborative
Karla Fortunato, MBA, Connecticut Council for Philanthropy
Shelley Geballe, JD, MPH, Yale Law School, Yale School of Public Health

Karyn Gilvarg, DataHaven
William Ginsberg, The Community Foundation for Greater New Haven
Emily M. Gordon, Stamford 2030 District
Rev. Bonita Grubbs, Christian Community Action, Inc.
Jacob Hacker, PhD, Yale University
Honorable Toni N. Harp, City of New Haven
Jennifer Heath, United Way of Greater New Haven
Juanita T. James, Fairfield County’s Community Foundation
Andrew Orefice, Yale New Haven Health
Julie Loughran, Connecticut Community Foundation
Honorable Denise Merrill, State of Connecticut
Jamie Mills, JD, Founder, What Works Connecticut
Marta Elisa Moret, MPH, Urban Policy Strategies, LLC
Sue Murphy, Liberty Bank Foundation
Marcella Nunez-Smith, MD, MHS, Yale University School of Medicine
John Padilla, New Paradigms Consulting, LLC
Kathryn Pettit, Urban Institute
Douglas W. Rae, Yale School of Management
Leon Rozenblit, JD, PhD, Prometheus Research, LLC
Dan Ryan, University of Toronto
Juan M. Salas-Romer, NHR Group
Caroline Smith, DataHaven
Mary Stuart, Trinity Health of New England
Sten H. Vermund, MD, PhD, Yale School of Public Health
Lyle Wray, Capitol Region Council of Governments

2015

DATAHAVEN PRESENTS AN AGE-INCLUSIVITY
REPORT IN GENEVA AT THE
WORLD HEALTH ORGANIZATION

2016

PUBLICATION

OF COMMUNITY INDEXES AND COMMUNITY
HEALTH NEEDS ASSESSMENTS FOR REGIONS
THROUGHOUT CONNECTICUT

Founders, Board of Directors, and Staff

We are grateful to our founders, staff, and board of directors for their tireless commitment and leadership.

Founders

Penny Canny, DataHaven & Yale School of Public Health
Jim Farnam, Farnam Associates, LLC
Cynthia Farrar, Purple States TV
Karyn Gilvarg, DataHaven
Doug Rae, Yale School of Management
Dan Ryan, University of Toronto

Staff

Mark Abraham, Executive Director
Camille Seaberry, Research Associate
Shaun McGann, Statewide Project Coordinator
Josephine Ankrah, MPH, Research Assistant
Alexandra Bourdillon, Research Assistant
Calvin Jahnke, Yale University President's Public Service Fellow
Aparna Nathan, Research Assistant
Mary Buchanan, Consultant and Former Project Manager

In addition to our core staff, DataHaven works with a number of expert researchers and consultants located throughout Connecticut and the United States who provide invaluable contributions and advice.

Special thanks to Jennifer Aniskovich, JD, Nonprofit Advisor

Board of Directors

Penny Canny, DataHaven Board Chairperson & Yale School of Public Health; Former Senior Vice President, The Community Foundation for Greater New Haven; Former Managing Director and Director of Research, Connecticut Voices for Children

Carl Amento, Executive Director, South Central Regional Council of Governments

Paul Cleary, Professor and Dean (2006-2017), Yale School of Public Health, and Professor, Yale Sociology Department

Rick Dunne, Executive Director, Naugatuck Valley Council of Governments

Karyn Gilvarg, Former Director, New Haven City Plan Department

Andy Orefice, Program Coordinator, Community and Government Relations, Yale New Haven Hospital

Brita Roy, Assistant Professor of General Medicine, Yale School of Medicine, and Director of Population Health, Yale Medicine

Caroline Smith, Co-Director and Co-Founder, Collab

Kara Straun, Knowledge and Evaluation Manager, The Community Foundation for Greater New Haven

Emily Wang, Associate Professor of General Medicine, Yale School of Medicine, and co-founder, Transitions Clinic Network

2018
DATAHAVEN UPDATES
AND REPEATS ITS
STATEWIDE SURVEY

2019
OUR SERIES OF *Community Wellbeing*
COMMUNITY WELLBEING
INDEX REPORTS
CONTINUES TO EXPAND

DataHaven

129 Church Street, Suite 605, New Haven CT 06510
203-500-7059 • info@ctdatahaven.org

DataHaven is a non-profit organization with a 25 year history of public service to Greater New Haven and Connecticut. Our mission is to improve quality of life by collecting, sharing, and interpreting public data for effective decision-making. DataHaven is a formal partner of the National Neighborhood Indicators Partnership of the Urban Institute in Washington, DC.

