

Newhallville and Dixwell Neighborhood Community Index

A project by neighborhood residents and youth

August 2019



Contents

1. Data report

Introduction	1
Population	2
Households	5
Education and opportunity	9
Economy	11
Wellbeing	17
Data sources	22
Notes on figures	27
Data tables for figures	28

2. Newhallville Youth

Photovoice Project	34
Conclusion	45
Acknowledgements	46

Introduction

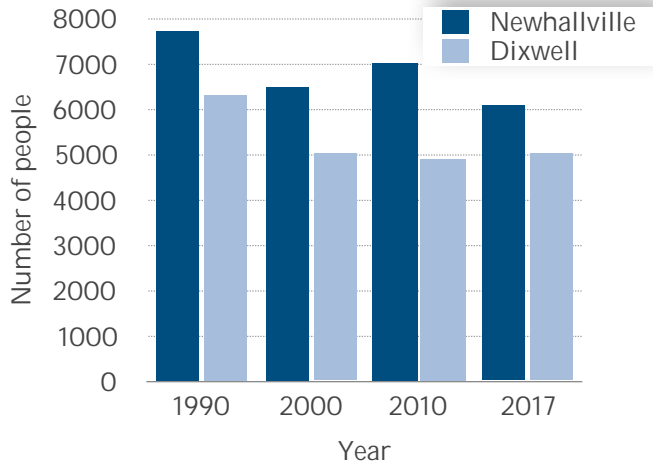
The Newhallville and Dixwell Neighborhood Community Index was born of a desire from neighborhood leaders to create a resource for residents to leverage while seeking grants or other tools for neighborhood development. This report aims to fulfill that desire by providing a review of aspects impacting quality of life in Newhallville and Dixwell while offering relevant historical context.

Another desire for this report was to highlight the experiences and voices of neighborhood youth. The Newhallville Youth Photovoice Project was conducted in the summer of 2019 and the results are the focus of the second section of this document beginning on page 34.

Population

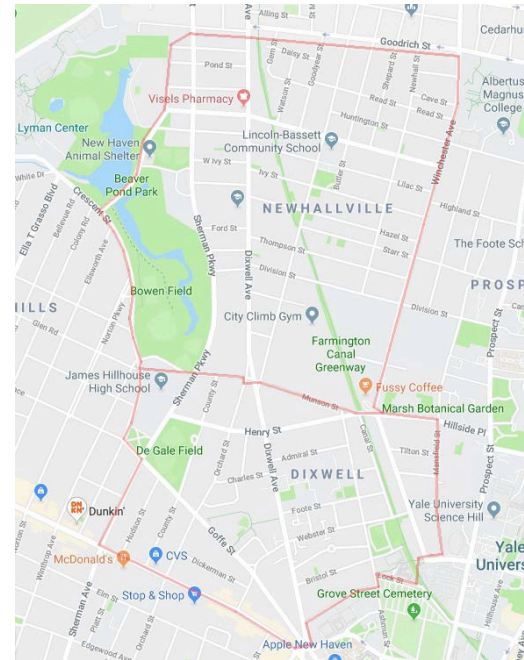
Newhallville and Dixwell, with areas of about 0.6 mi² and 0.4 mi² respectively, are two of New Haven's most culturally rich neighborhoods.

Figure 1. Total population



Together, they are home to approximately

Figure 2. Newhallville and Dixwell

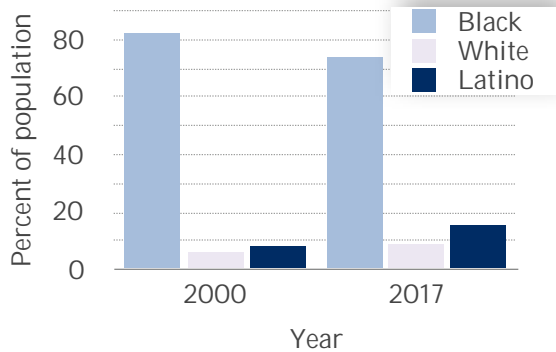


11,080 residents.¹ Fewer residents live in these two neighborhoods now compared to the past 3

decades (Figure 1).

The majority of Newhallville and Dixwell residents are and have historically been Black.²

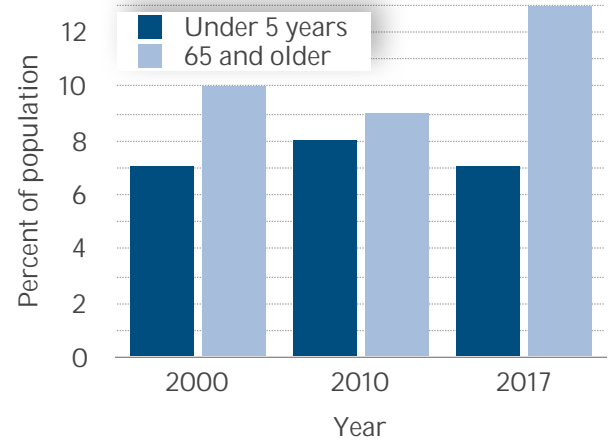
Figure 3. Population by race, Newhallville and Dixwell



In recent years, the population has become more racially and ethnically diverse as the share

of white and Latino residents has increased

Figure 4. Percent of population under 5 and over 65 years, Newhallville and Dixwell



between 2000 and 2017 (Figure 3). Neighborhood demographics have also shifted in regards to age. The share of residents 65 and

older has increased from 10 percent in 2000 to 13 percent in 2017. On the other hand, the population under 5 years old has remained the same at 7 percent (Figure 4).³

Newhallville is home to 773 immigrants. The foreign-born share makes up 13 percent of the neighborhood's overall population.⁴ In Dixwell, the foreign-born population is 9 percent (about 469 residents). Together, immigrants make up 11 percent of both neighborhoods. About half of this population entered the US in 2010 or later. Among the relatively newer arrivals, 43 percent are naturalized citizens while the remainder are not.⁵

In the 1850s, a small Black population emerged in Dixwell, around Dixwell Ave, Goffe, Sperry and Webster Streets.⁶

Households

In Newhallville and Dixwell, there are 4,486 households. Half of them consist of families, as opposed to people living alone (45 percent), and other types of households (5 percent). Table 1 shows the breakdown of households. Most of the family households consist of either a female householder (63 percent) or single parent mother (32 percent).⁷

There are 5,177 housing units in Newhallville and Dixwell (Table 2). About 13 percent are vacant.⁸ Of the remaining 87 percent, the majority (76 percent) are renter-occupied.⁹ Newhallville's homeownership rate is 30 percent compared to Dixwell's 15 percent.¹⁰

Table 1. Household type, 2017

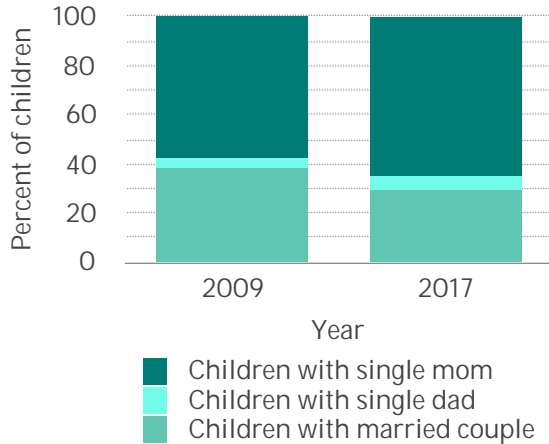
Household type	Newhallville		Dixwell		Total	
	n	%	n	%	n	%
Total households	2,660		1,826		4,486	
Family households	1,425	54	812	45	2,237	50
Adult(s) living alone	1,175	44	848	46	2,023	45
Other household types	60	2	166	9	226	5

Table 2. Housing occupancy, 2017

Housing occupancy	Newhallville		Dixwell		Total	
	n	%	n	%	n	%
Total housing units	3,089		2,088		5,177	
Vacant housing units	429	14	262	13	691	13
Occupied housing units	2,660	86	1,826	87	4,486	87
Occupied housing units	2,660		1,826		4,486	
Owner-occupied	790	30	278	15	1,068	24
Renter-occupied	1,870	70	1,548	85	3,418	76

“The early 1870s witnessed a great increase in residential construction, reflecting the growth of industry, especially the appearance of the Winchester Repeating Arms Co. Admiral, Henry, and Gregory Streets were established at this time, where houses were constructed for factory workers. The rest of the neighborhood’s streets were laid out by 1911.”¹¹

Figure 5. Children's household structure (% of children), Newhallville and Dixwell



There are 2,743 youth living in both neighborhoods. More than half (65 percent) live with a single mother, while 30 percent live with a married couple. Single dads make up the remainder. Fewer children live with married couples now compared to 2009 (Figure 5).¹²

Education and opportunity

Of the 2,743 youth in Newhallville and Dixwell, one in four kids is between the ages of 0 and 5, while 73 percent are between 5 and 17 years old. There are 638 youth between the ages of 16 and 19 years old.¹³ Twelve percent of this age group are unemployed and out of school.¹⁴ This group is referred to as “opportunity youth”. There are many ways to engage this group through existing resources in Newhallville and Dixwell, including the Connecticut Center for Arts and Technology (ConnCAT) which is dedicated to creating empowering, arts-based educational environments for at-risk youth and training programs for under- and unemployed adults. ConnCAT has served more than 1,200 children since 2012 and offers after-school programming in a wide variety of topics such as agriculture,

art, cooking, engineering, film and graphic arts.¹⁵

Table 3. Educational attainment, 2017

Educational attainment	Newhall-ville		Dixwell		Total	
	n	%	n	%	n	%
Population 25 years and over	3,686		3,219		6,905	
Less than high school diploma	778	21	520	16	1,298	19
High school only	1,419	38	1,310	41	2,729	40
High school degree or higher	2,908	79	2,699	84	5,607	81
Bachelor's degree or higher	575	15	586	18	1,161	17

In both neighborhoods, 19 percent of adults over 25 years old lack a high school diploma (Table 3). This is more than the share throughout the City of New Haven (15 percent) and the State of Connecticut (10 percent). On the other hand, 17 percent of neighborhood residents have at least a bachelor's degree compared to 34 percent in the city and 28 percent across the state.¹⁶

The Dixwell Community "Q" House originally built in 1924 was a vital resource that served youth and families by offering "music, drama, and art classes, sponsored trips and organized sports" as well as other enhancing experiences.¹⁷ While the original building no longer stands (demolished in 2003), a remodeled Q House is set to open in a couple years.¹⁸

Economy

Among Newhallville and Dixwell residents aged 16 years or older, 55 percent are in the labor force. Of those in the labor force, 83 percent are employed while about 17 percent are unemployed compared to 10 percent unemployed across the city.¹⁹ This unemployment rate of 17 percent does not capture residents who may be underemployed, that is, those who are either unemployed but looking for work, or employed part time but preferring full-time work. Underemployment rates in the city as a whole are approximately 28 percent.²⁰

Newhallville and Dixwell workers are most likely to be employed in service occupations. Of the 3,910 residents that are 16 years or older

Table 4. Occupations for employed civilian population 16 years and over, 2017

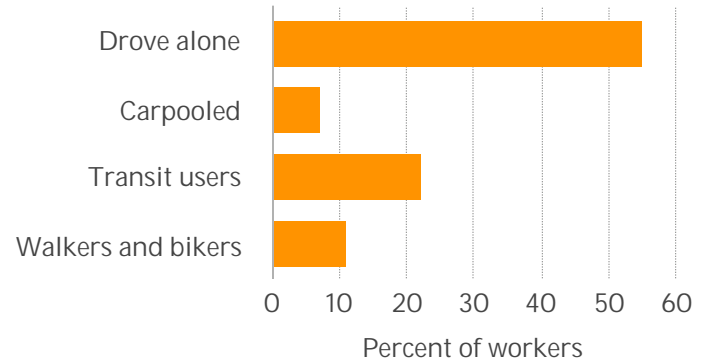
Occupations	Newhallville		Dixwell		Total	
	n	%	n	%	n	%
Total employed	2,391		1,519		3,910	
Management, professional & related	589	25	519	34	1,108	28
Service	946	40	417	27	1,363	35
Sales & office	471	20	360	24	831	21
Natural resource, construction & maintenance	72	3	64	4	136	3
Production, transportation & material moving	313	13	159	10	472	12

and employed, 35 percent work in the service industry, followed by 28 percent who work in management and related professional occupations (Table 4).²¹

Most workers do not work at home, and of those who commute to work, most do so alone. The second most common commute mode for Newhallville and Dixwell residents is public transit (Figure 6).²²

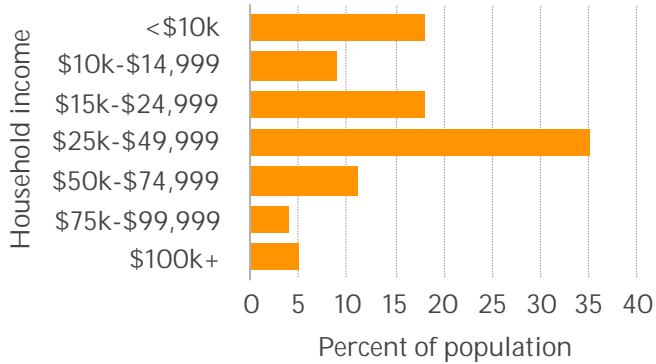
Sixty-seven percent of children in Newhallville live in a household with all parents in the labor force. In Dixwell, this share is 90 percent.²³

Figure 6. Commute mode for out-of-home workers 16 years and over, Newhallville and Dixwell, 2017



Around the mid-1900s a wide variety of businesses lined Dixwell Ave. including a laundromat, confectionery, jazz clubs, boutiques, and more.²⁴

Figure 7. Household income, Newhallville and Dixwell, 2017



In 2017, the average household in Newhallville earned \$33,113, compared to \$42,091 in Dixwell. The median earnings for both neighborhoods combined was \$36,768. This is lower than the median earnings of households across the city (\$39,191) and only half of the earnings of residents statewide (\$73,781).²⁵ In

Newhallville and Dixwell, 45 percent of households earned less than \$25,000, 79 percent earned less than \$50,000 and 5 percent earned more than \$100,000 in 2017. Almost 20 percent of households earned less than \$10,000 (Figure 7).²⁶

In Newhallville, the low-income rate is 67 percent (1.4 times that of the city and 3 times that of the state). This means there are about 4,054 residents living in households with incomes less than twice the federal poverty level. In Dixwell, 2,321 residents (55 percent) are considered low-income. Together, the low-income rate in both neighborhoods is 62 percent.²⁷ In Newhallville and Dixwell combined, 83 percent of children under 18 and 47 percent of adults 65 and older are considered low-income (Figure 8).²⁸ The poverty rate of

both neighborhoods is 29 percent (30 percent in Dixwell and 28 percent in Newhallville). This means there are about 3,000 residents earning less than the federal poverty level (Figure 9).²⁹ Almost half of all children under the age of 5 live in poverty (43 percent) in Newhallville. In Dixwell, the poverty rate for children under 5 is 27 percent. In both neighborhoods combined, this rate is 37 percent, slightly higher than the 34 percent of children under 5 across the city living in poverty.³⁰

Figure 8. Comparison of low-income rate by age group, 2017

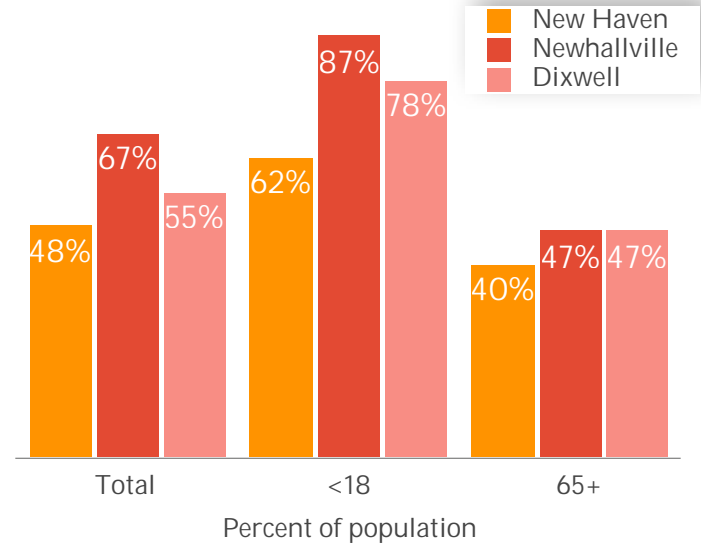
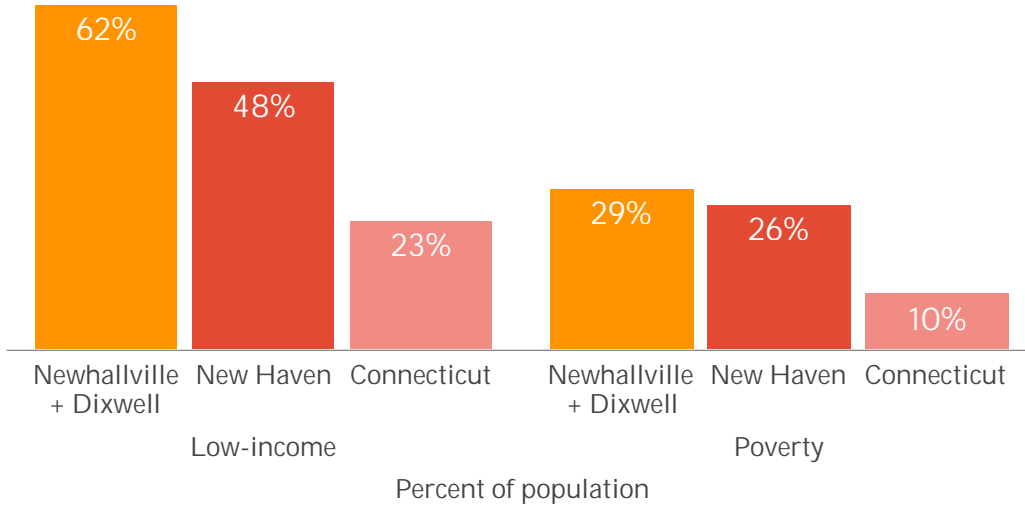


Figure 9. Comparison of low-income and poverty rates, 2017

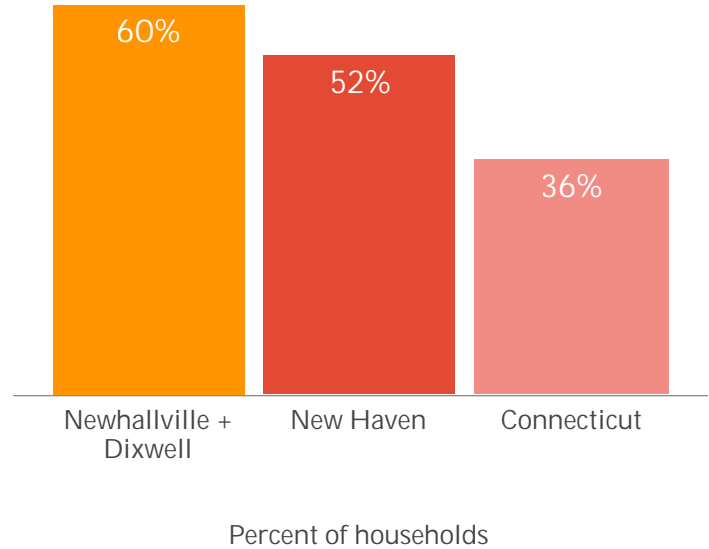


Among the occupied housing units in both neighborhoods, 39 percent have no vehicle, while 44 percent have 1 and 17 percent have 2 or more vehicles.³¹ Moreover, 5 percent of renter-occupied housing units in both neighborhoods

are considered overcrowded, meaning there are 1 or more occupants per room, while none of the owner-occupied units are overcrowded.³² Thirty-nine percent of homes in the neighborhood are valued between \$100,000 and \$149,999. About 8 percent are valued at less than \$50,000, while 29 percent are valued at \$200,000 or higher.³³

Cost-burdened households are those that spend 30 percent or more of income on housing costs while severely cost-burdened households are those that spend 50 percent or more. Sixty-four percent of homeowners and 62 percent of renters in Newhallville are cost-burdened. In Dixwell, 28 percent of homeowners and 61 percent of renters are cost-burdened (Figure 10).³⁴

Figure 10. Comparison of housing cost-burden rate (renters and owners), 2017



Wellbeing

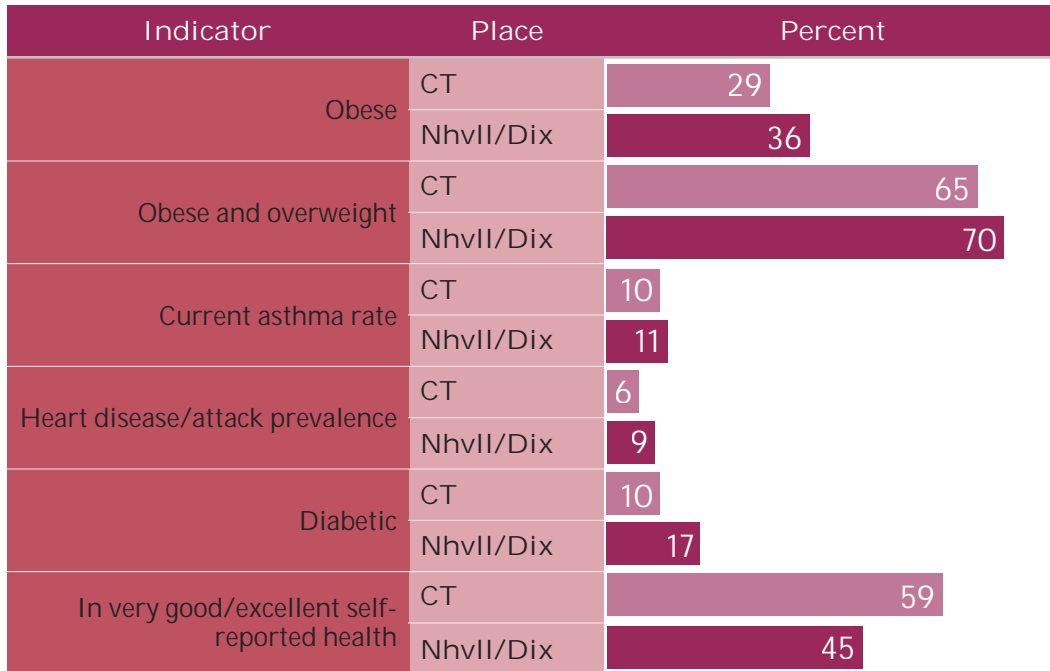
This section uses data from the 2018 DataHaven Community Wellbeing Survey to sketch a picture of individual and community wellbeing for residents in Newhallville and Dixwell compared to residents statewide. The results depicted in Figures 10-13 derive from live interviews of 16,000 residents across the state. Due to the relatively small sample size in Newhallville and Dixwell, a grouping of the six lowest-income neighborhoods in New Haven (Dixwell, Dwight, Fair Haven, Hill, Newhallville and West River) is used for comparison.* Survey respondents were asked to rate how happy and anxious they were. Residents in the lowest-income group were generally more anxious and less happy compared to adults statewide (Figure 11). Residents in the group

Figure 11. Mental health comparison, 2018

Indicator	Place	Percent
Not at all/only a little bit happy	CT	12
	NhvII/Dix*	14
Mostly/completely anxious	CT	12
	NhvII/Dix	18

were also more likely to report having negative physical health outcomes such as obesity, asthma, heart disease or heart attack, and diabetes. Only 45 percent of adults surveyed from the lowest-income group reported being in excellent or very good health, while 59 percent of statewide adults reported the same (Figure 12).

Figure 12. Physical health comparison, 2018



Survey respondents also reflected on factors related to community wellbeing such as local government responsiveness and trust among neighbors. In general, Newhallville and Dixwell residents (as part of the lowest-income group) reported feeling less safe and less trustful of neighbors compared to statewide residents. However, Newhallville and Dixwell residents agree just as much as statewide residents that neighbors are involved in trying to improve the neighborhood (Figure 13). The high attendance at the monthly Community Management Team meetings in both neighborhoods is an attestation of residents' desire to improve community vitality.

Figure 13. Neighborhood safety comparison, 2018

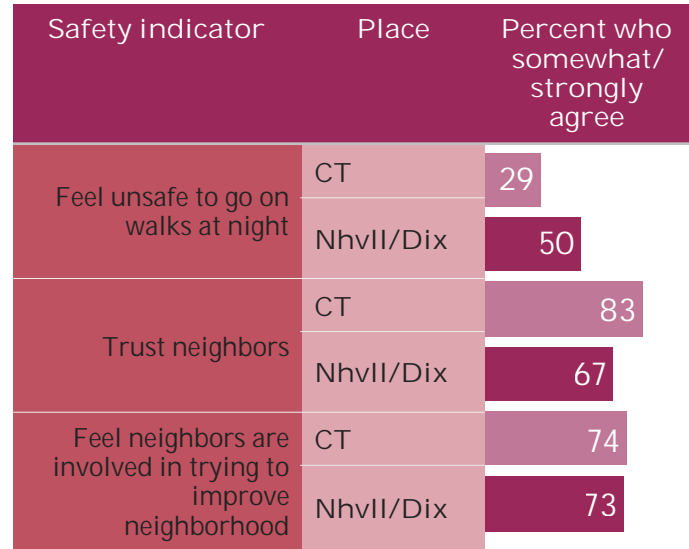
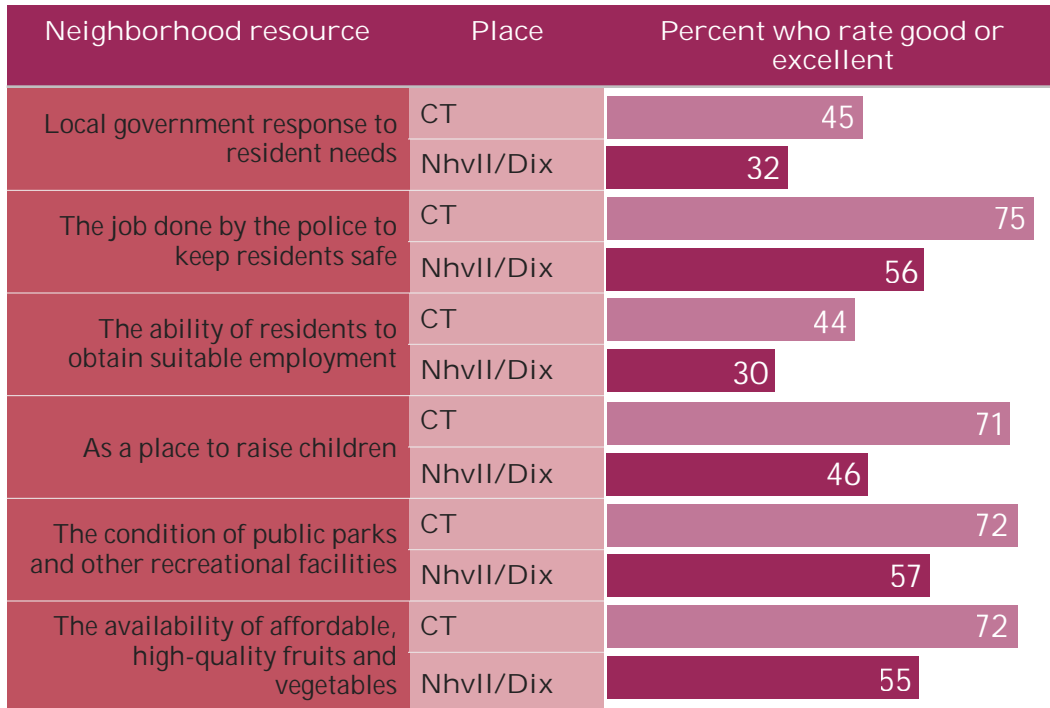


Figure 14. Neighborhood resource comparison, 2018



The annual Freddie Fixer Parade, originally conceived by Dr. Fred Smith in 1962 from a desire for residents to take pride and invest in the cleanliness of the community, is now believed to be the largest Black parade in New England.³⁵

contribute to the overall wellbeing of a neighborhood (Figure 14).³⁶

Seventy-four percent of residents in Newhallville and Dixwell (as part of the lowest-income group) reported being satisfied with the area in which they live, slightly less than the 81 percent of statewide residents who reported the same. They were also less likely than adults across Connecticut to rate the ability of neighborhood residents to obtain suitable employment as good or excellent, along with several other neighborhood resources that

Data sources

¹ U.S. Census Bureau. (2019). 2017 American Community Survey 5-year estimates, Table B01003, Total population. Available at <https://factfinder.census.gov/>.

² U.S. Census Bureau. (2019). 2017 American Community Survey 5-year estimates, Table B03002, Hispanic or Latino origin by race. Available at <https://factfinder.census.gov/>.

³ U.S. Census Bureau. (2019). 2017 American Community Survey 5-year estimates, Table B01001, Sex by Age. Available at <https://factfinder.census.gov/>.

⁴ U.S. Census Bureau. (2019). 2017 American Community Survey 5-year estimates, Table B05001, Nativity and citizenship status in the United States. Available at <https://factfinder.census.gov/>.

⁵ U.S. Census Bureau. (2019). 2017 American Community Survey 5-year estimates, Table B05005, Period of entry by nativity and citizenship status in the United States. Available at <https://factfinder.census.gov/>.

⁶ Walk New Haven. (2019). Cultural Heritage Tours, a project of the Ethnic Heritage Center. History of the Dixwell Neighborhood. Available at http://walknewhaven.org/tours/map_sites/lowerdixwell_history.html.

⁷ U.S. Census Bureau. (2019). 2017 American Community Survey 5-year estimates, Table B11001, Household type (including living alone). Available at <https://factfinder.census.gov/>.

⁸ U.S. Census Bureau. (2019). 2017 American Community Survey 5-year estimates, Table B25004, Vacancy status. Available at <https://factfinder.census.gov/>.

⁹ U.S. Census Bureau. (2019). 2017 American Community Survey 5-year estimates, Table B25003, Tenure. Available at <https://factfinder.census.gov/>.

¹⁰ Ibid.

¹¹ Walk New Haven. (2019). Cultural Heritage Tours, a project of the Ethnic Heritage Center. History of the Dixwell Neighborhood. Available at http://walknewhaven.org/tours/map_sites/lowerdixwell_history.html.

¹² U.S. Census Bureau. (2019). 2017 American Community Survey 5-year estimates, Table B09005, Household type for children under 18 years in households (excluding householders, spouses, and unmarried partners). Available at <https://factfinder.census.gov/>.

¹³ U.S. Census Bureau. (2019). 2017 American Community Survey 5-year estimates, Table B01001, Sex by Age. Available at <https://factfinder.census.gov/>.

¹⁴ U.S. Census Bureau. (2019). 2017 American Community Survey 5-year estimates, Table B14005, Sex by school enrollment by educational attainment by employment status for the population 16 to 19 years. Available at <https://factfinder.census.gov/>.

¹⁵ ConnCAT. (2019). Facts and Figures. Available at <http://conncat.org/life-at-conncat/facts-and-figures/>.

¹⁶ U.S. Census Bureau. (2019). 2017 American Community Survey 5-year estimates, Table B15002. Sex by educational attainment for the population 25 years and over. Available at <https://factfinder.census.gov/>.

¹⁷ Walk New Haven. (2019). Cultural Heritage Tours, a project of the Ethnic Heritage Center. Lower Dixwell Tour. Available at http://walknewhaven.org/tours/sites/lowerdixwell/lowerdixwell_site10.html.

¹⁸ New Haven Independent. (2019). Q House Design Gets Final Approval, by Thomas Breen, 2018. Available at https://www.newhavenindependent.org/index.php/archives/entry/q_design_gets_final_approval/.

¹⁹ U.S. Census Bureau. (2019). 2017 American Community Survey 5-year estimates, Table B23025, Employment status for the population 16 years and over. Available at <https://factfinder.census.gov/>.

²⁰ 2018 DataHaven Community Wellbeing Survey. Available at <https://ctdatahaven.org>.

²¹ U.S. Census Bureau. (2019). 2017 American Community Survey 5-year estimates, Table C24010, Sex by occupation for the civilian employed population 16 years and over. Available at <https://factfinder.census.gov/>.

²² U.S. Census Bureau. (2019). 2017 American Community Survey 5-year estimates, Table B08301, Means of transportation to work. Available at <https://factfinder.census.gov/>.

²³ U.S. Census Bureau. (2019). 2017 American Community Survey 5-year estimates, Table B23008. Age of own children under 18 years in families and subfamilies by living arrangement by employment status of parents. Available at <https://factfinder.census.gov/>.

²⁴ Walk New Haven. (2019). Cultural Heritage Tours, a project of the Ethnic Heritage Center. History of the Dixwell Neighborhood. Available at http://walknewhaven.org/tours/map_sites/lowerdixwell_history.html.

²⁵ U.S. Census Bureau. (2019). 2017 American Community Survey 5-year estimates, Table B19025, Aggregate household income in the past 12 months (in 2017 inflation-adjusted dollars). Available at <https://factfinder.census.gov/>.

²⁶ U.S. Census Bureau. (2019). 2017 American Community Survey 5-year estimates, Table B19001, Household income in the past 12 months (in 2017 inflation-adjusted dollars). Available at <https://factfinder.census.gov/>.

²⁷ U.S. Census Bureau. (2019). 2017 American Community Survey 5-year estimates, Table C17002, Ratio of income to poverty level in the past 12 months. Available at <https://factfinder.census.gov/>.

²⁸ U.S. Census Bureau. (2019). 2017 American Community Survey 5-year estimates, Table B17024, Age by ratio of income to poverty level in the past 12 months. Available at <https://factfinder.census.gov/>.

²⁹ U.S. Census Bureau. (2019). 2017 American Community Survey 5-year estimates, Table C17002, Ratio of income to poverty level in the past 12 months. Available at <https://factfinder.census.gov/>.

³⁰ U.S. Census Bureau. (2019). 2017 American Community Survey 5-year estimates, Table B17024, Age by ratio of income to poverty level in the past 12 months. Available at <https://factfinder.census.gov/>.

³¹ U.S. Census Bureau. (2019). 2017 American Community Survey 5-year estimates, Table B25044, Tenure by vehicles available. Available at <https://factfinder.census.gov/>.

³² U.S. Census Bureau. (2019). 2017 American Community Survey 5-year estimates, Table B25014, Tenure by occupants per room. Available at <https://factfinder.census.gov/>.

³³ U.S. Census Bureau. (2019). 2017 American Community Survey 5-year estimates, Table B25075, Value. Available at <https://factfinder.census.gov/>.

³⁴ U.S. Census Bureau. (2019). 2017 American Community Survey 5-year estimates, Table B25106, Tenure by housing costs as a percentage of household income in the past 12 months. Available at <https://factfinder.census.gov/>.

³⁵ Walk New Haven. (2019). Cultural Heritage Tours, a project of the Ethnic Heritage Center. History of the Dixwell Neighborhood. Available at http://walknewhaven.org/tours/map_sites/lowerdixwell_history.html.

³⁶ 2018 DataHaven Community Wellbeing Survey. (2019). Available at <https://ctdatahaven.org>.

Notes on figures

All 2017 data is from the U.S. Census Bureau 2017 American Community Survey 5-year estimate tables. Sources for data from additional years are listed.

- Figure 1. Total population. 1990, 2000, and 2010 figures are from the U.S. Census Bureau Decennial Census, Table P1 Total Population.
- Figure 3. Population by race, Newhallville and Dixwell. 2000 figures are from U.S. Census Bureau Decennial Census, Table P008, Hispanic or Latino by race.
- Figure 4. Share of population under 5 years old & 65 and older, Newhallville. 2000 figures are from U.S. Census Bureau Decennial Census SF3, Table P08, Sex by age. 2010 figures are from U.S. Census Bureau 2010 American Community Survey 5-year estimates, Table B01001, Sex by age.
- Figure 5. Children in households, Newhallville. 2010 figures are from U.S. Census Bureau 2010 American Community Survey 5-year estimates, Table B11003, Family type by presence and age of own children under 18 years.
- Figures 11-14. The “Nhvll/Dix” abbreviation represents Newhallville and Dixwell as a grouping of the six lowest-income neighborhoods in New Haven (Dixwell, Dwight, Fair Haven, Hill, Newhallville and West River).

Data tables for figures

Figure 1 data table

	1990	2000	2010	2017
Newhallville	7,722	6,478	6,990	6,074
Dixwell	6,298	5,011	4,902	5,006
Total	14,020	11,489	11,892	11,080

Total population

Figure 3 data table

		2000	2017
Newhallville	Black	5,873	4,931
	White	127	182
	Hispanic	304	891
Dixwell	Black	3,600	3,216
	White	605	814
	Hispanic	616	733
Total	Black	9,473	8,147
	White	732	996
	Hispanic	920	1,624

Population by race, Newhallville and Dixwell

Figure 4 data table

		2000	2010	2017
Newhallville	Under 5 years	562	535	424
	65 and older	644	674	835
Dixwell	Under 5 years	245	371	313
	65 and older	461	361	574
Total	Under 5 years	807	906	737
	65 and older	1,105	1,035	1,409

Percent of population under 5 and over 65 years, Newhallville and Dixwell

Figure 5 data table

		2009	2017
Newhallville	Kids with married couple	818	641
	Kids with single moms	1,162	924
	Kids with single dads	123	126
Dixwell	Kids with married couple	384	184
	Kids with single moms	629	850
	Kids with single dads	29	18
Total	Kids with married couple	1,202	825
	Kids with single moms	1,791	1,774
	Kids with single dads	152	144

Children's household structure (% of children), Newhallville and Dixwell

Figure 6 data table

	Newhall-ville	Dixwell	Total
Out-of-home workers 16 years and older	2,205	1,481	3,686
Drove alone	1,473	634	2,107
Carpooled	170	103	273
Transit users	442	409	851
Walkers and bikers	120	294	414
Taxi, motorcycle & others	0	0	0

Commute mode for out-of-home workers 16 years and over, Newhallville and Dixwell, 2017

Figure 7 data table

	Newhall-ville	Dixwell	Total
Less than \$10,000	484	303	787
\$10,000-\$14,999	198	196	394
\$15,000-\$24,999	510	311	821
\$25,000-\$49,999	964	599	1,563
\$50,000-\$74,999	324	183	507
\$75,000-\$99,999	102	86	188
\$100,000-\$149,999	59	81	140
\$150,000-\$199,999	0	52	52
\$200,000 or more	19	15	34

Household income, Newhallville and Dixwell, 2017

Figure 8 data table

		Newhallville	Dixwell	New Haven
Total population	Population for whom poverty status is determined	6,074	4,195	122,320
	Income below 200% of poverty level	4,054	2,321	58,932
Under 18 years	Population for whom poverty status is determined	1,691	1,044	28,672
	Income below 200% of poverty level	1,464	814	17,874
65 and older	Population for whom poverty status is determined	835	565	13,136
	Income below 200% of poverty level	394	263	5,297

Comparison of low-income rate by age group, 2017

Figure 9 data table

		Newhallville	Dixwell	Connecticut	New Haven
Low-income	Population for whom poverty status is determined	6,074	4,195	3,486,033	122,320
	Income below 200% of poverty level	4,054	2,321	802,453	58,932
Poverty	Income below 100% of poverty level	1,723	1,276	350,783	31,338

Comparison of low-income and poverty rates, 2017


Figure 10 data table

	Newhallville	Dixwell	Connecticut	New Haven
All households	2,660	1,826	1,361,755	49,987
All households paying 30% of income for housing	1,657	1,026	487,769	25,758

Comparison of housing cost-burden rate (renters and owners), 2017

Newhallville Youth Photovoice Project

July 2019



Project description

Photovoice is a participatory research method in which people can identify, represent and enhance their community by utilizing photography. The purpose of the Newhallville Youth Photovoice Project was to capture the experiences of neighborhood teenagers as a supplementary component of the Newhallville and Dixwell Neighborhood Community Index.

In June 2019, five Newhallville youth photo-researchers, who are introduced on the next page, set out to answer the following questions about their neighborhood:

What do I like most about my community?

What is the best part about being a teenager in Newhallville?

What can be done to make Newhallville a better place for young people?

The remainder of the Index is a compilation of the photographs and narratives thoughtfully crafted by each researcher in an effort to share what life is like as a young person in Newhallville. Our hope is that throughout the following pages you — the reader, the youth advocate, the policymaker, the neighbor — will become better informed about the goals and desires of Newhallville youth.

Meet the photo-researchers



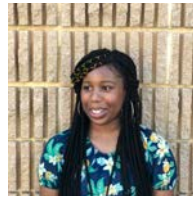
Andre, 15 years old
I am a student at Metropolitan Business Academy and I enjoy playing basketball and listening to music.



Anniya, 14 years old
I like to shop and am interested in cosmetology. When I get older I would like to attend Spelman College or Howard University.



Aden, 14 years old
I am a student at Amistad High school and I love sports.



Asia, 15 years old
I am a sophomore at Common Ground High School. In my free time I enjoy drawing flowers.



Malikia, 19 years old
I am a sophomore at Temple University. I enjoy watching and playing sports.

What do I like most about my community?

"I took a picture of my school because I feel as though my school is a really good school due to how it was ranked 1st in academics just a couple years ago. Therefore if we had better schools kids would have better education."

-Aden



"I chose Bassett Street Park because it is a place for children to play and have fun. Also a basketball court is there so the teenagers and older people could have fun too. I also have fun playing at Bassett Street Park. I usually spend about an hour or two over there and I get to communicate with my friends and have a good time."

-Andre



"I like that I am able to go to the various parks and experience wildlife in their natural habitat. I like to relax and take it all in in the beautiful setting. Beaver Pond Park features a football field stadium, a track, and a baseball field, all used by two city high schools. The park also includes lagoons and trails in its nature areas."

-Asia



"I like that I get to be with my family and spend time with my family and specifically my siblings. My siblings encourage me to do more things outside in the world, and explore. I used to be scared to meet new people and to socialize when I was younger, I was really shy. And now I like socializing with people and they encourage me to do that and to talk more with other people."

-Anniya



What is the best part about being a teenager in Newhallville?

“My favorite part about being a teen in the Newhallville community is the impact I get to make on the youth of our community, to be the best they can be. I enjoy being someone youth can look up to and inspire to be like.”

-Malikia



“I took a picture of the sky to represent freedom. This is because when I was a child I did not have as much freedom but now that I am a teen I have more freedom. Additionally, when I was younger I would always be under parent supervision. But now that I am a teen there are some activities where I don't need parent supervision.”

-Aden



"I think the best part of being a teenager is having Harris and Tucker School right down the street from my house. It is a very good resource for me to get a job. For example, in my sophomore year of high school I completed all 100 hours of my community service there. And it is also a great job to have as a teenager if you like kids."

-Andre



"The best part about being a teenager is socializing with my friends and hanging out with people and meeting other people and becoming friends with them. Usually we hang around Dunkin Donuts. We also hang around Mill Rock Park and meet other people there. I like socializing because some people could be going through rough times and so I like to talk to them about what's going on with them and to have them confide in me and come to me about anything. I also feel that I can confide in my friends."

-Anniya



“The best part about being a teenager in Newhallville is the New Haven City bikes because it allows young people like me to rent, ride, and return the bikes. For those who don’t have their own transportation, it is very convenient.”

-Asia



What can be done to make Newhallville a better place for youth?

"I took a picture of the potholes. This is because the potholes are messing up cars in the neighborhood. In addition, my brother was playing around in the street and fell over a pothole which caused him to have a bad knee."

-Aden



"I believe if we have more people with the heart of Miss Kim from the Harris and Tucker School, Newhallville would be a better community. I say this because Miss Kim motivates the kids in our community to do better. She also gives teens in the community job experience whether it is community service or an actual job. She motivates me to be better and put my fullest potential into what I am doing. Miss Kim also introduces teens to others in the community that can impact or help ones life."

-Malikia



"In my perspective, I chose speed bumps because they would help a lot of pedestrians like myself have a safer walk across the street."

-Andre



"To make Newhallville a better place for young people is to make more innovation centers like Science Park, tailored for the youth. Science Park is a unique group of office spaces, labs, workrooms and meeting areas designed to support research and development in science and tech."

-Asia Vilsaint



"I would like to see more people cleaning up after themselves to make Newhallville a better place for the youth. We should encourage the youth not to litter. In my neighborhood there are some elderly people who cannot bend down to pick up the trash in their yards. As young people we should be mindful of the elderly people who live there so they won't injure themselves by trying to pick up the trash."

-Anniya



Conclusion

The results of the Newhallville Youth Photovoice Project show that young people in the neighborhood are passionate about

- learning
- giving back to our community
- preserving nature
- caring for the environment
- being leaders
- living in a safe environment and
- having opportunities to learn more about science and technology.

Acknowledgements

The Newhallville and Dixwell Neighborhood Community Index and the Newhallville Youth Photovoice Project would not have been possible without the support of:

- Community Foundation for Greater New Haven
- Kim Harris, Inspired Communities Inc.
- Erik Clemons, Connecticut Center for Arts and Technology
- Nina Silva, Dixwell Community Management Team
- Josephine Ankrah, DataHaven

Newhallville and Dixwell Neighborhood Community Index